



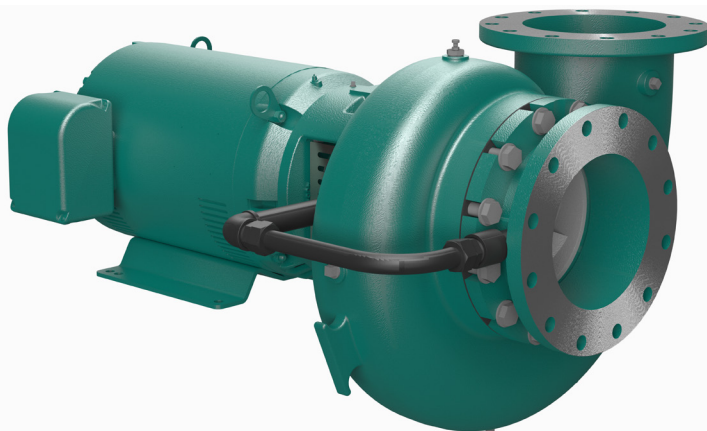
10YBQ-CC

AVAILABLE MOUNTING CONFIGURATIONS

10YBQ-CC CLOSE-COUPLED
10YBQ-VC VERTICAL CLOSE-COUPLED

OPERATING LEVELS

MIN FLOW	1,250 GPM	283.91 m3/h
MAX FLOW	5,100 GPM	1,158.34 m3/h
DISCHARGE SIZE	10"	254 mm
SUCTION SIZE	10"	254 mm
MAX SPEED	1,800 RPM	1,800 RPM
SOLIDS HANDLING	1.38"	35.05 mm
MAX PRESSURE	150 PSID	1,034.21 kPa
SHUT-OFF HEAD	114' @ 49.35 PSID	34.75 m @ 340.26 kPa
BEP HEAD	68' @ 29.44 PSID	20.73 m @ 202.98 kPa
BEP FLOW	3,700 GPM	840.36 m3/h
BEP EFFICIENCY	80%	80%



A typical picture of the pump is shown. Please contact Cornell Pump Company for further details. All information is approximate and for general guidance only.

PARTS	CAST IRON BRONZE FITTED	ALL IRON
WEAR RING	BRONZE SAE 660	CAST IRON ASTM A48 CL30
IMPELLER	CAST IRON ASTM A48 CL30	CAST IRON ASTM A48 CL30
VOLUTE	CAST IRON ASTM A48 CL30	CAST IRON ASTM A48 CL30
SHAFT	CARBON STEEL	CARBON STEEL
SHAFT SLEEVE	BRONZE SAE 660	416 STAINLESS STEEL
PACKING	GRAPHITED ACRYLIC	GRAPHITED ACRYLIC
MECHANICAL SEAL	T-1, BUNA-CARBON/CERAMIC	T-1, BUNA-CARBON/CERAMIC
BACKPLATE	CAST IRON ASTM A48 CL30	CAST IRON ASTM A48 CL30
MOTOR	OPEN DRIPPROOF - STANDARD TEFC AND OTHERS - OPTIONAL	OPEN DRIPPROOF - STANDARD TEFC AND OTHERS - OPTIONAL

The 10YBQ pump is designed with Cornell's renowned quality and durability. It features a 10" discharge, 10" suction, enclosed multi-vane impeller and flanged tangential single volute. Available standard in Cast Iron Bronze Fitted or All Iron. Shower Curtain Shield protects close coupled motor.

- Industry-leading two-year warranty
- Industry-leading efficiencies
- Standard cast iron bronze fitted construction (CI impeller)
- External hydraulic balance line
- Back pull-out design
- Replaceable wear rings and shaft sleeve
- "Shower Curtain Shield" bearing protection
- Low operating costs
- RunDry™ option (Indefinite run dry capability)
- Optional Cycloseal® w/ T-1 mechanical seal



AGRICULTURE



FOOD



INDUSTRIAL



MINING



MUNICIPAL



OIL & GAS

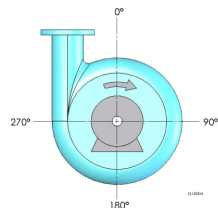


REFRIGERATION



RENTAL

10YBQ-CC

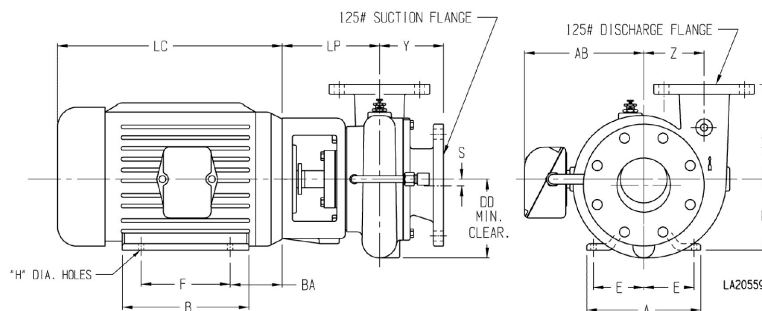


NOTES:

Discharge positions are viewed from the drive end.
Standard increments of discharge position are shown in the chart below (DISCH INCR). Consult factory for other discharge positions.

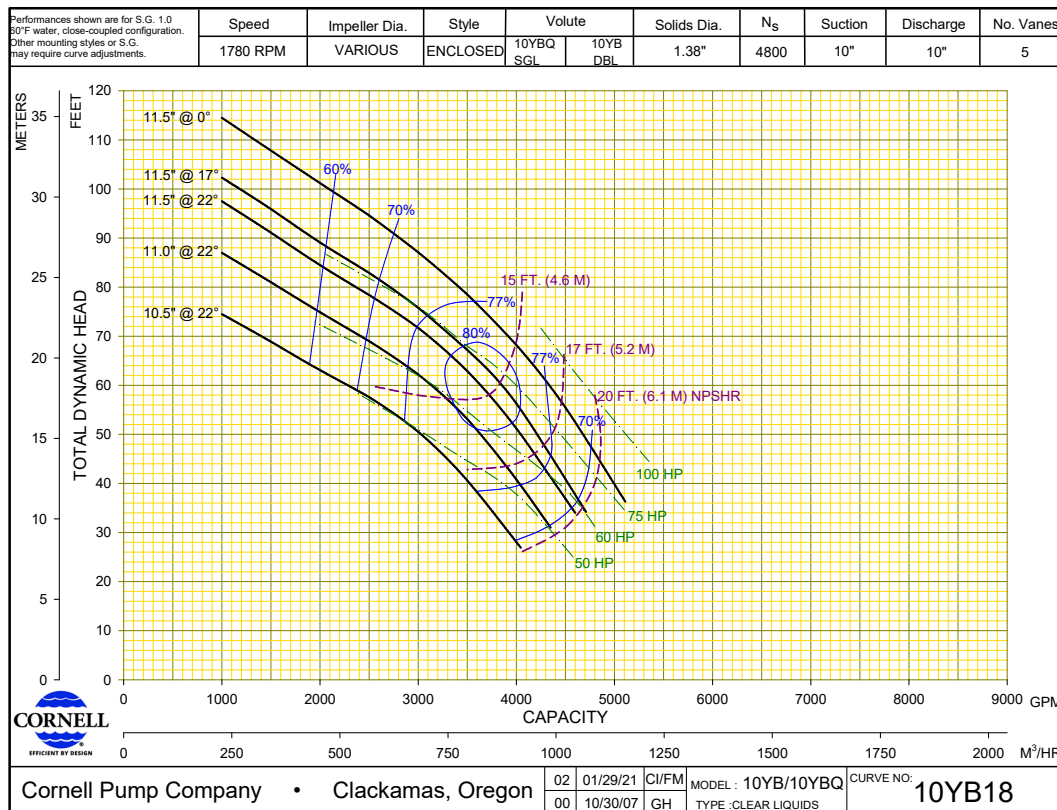
NOTES:

1. Motor dimensions are for ODP motors and may vary depending on models and manufacturer.
2. Flange connection dimension can vary $\pm .12$ inch.
3. Do not use for construction unless certified.



PUMP DIMENSIONS										
MODEL	CONNECTION		DISCH. INCR.	AK DIM	DD	S	X	Y	Z	LP
	DISCH.	SUCT.								
10YB/Q	10	10	90°	12.5	18.25	-	11	10.7	12.5	11.75

MOTOR DIMENSION										
MOTOR FRAME	AK DIM	A	B	D	E	F	H	AB	BA	LC
143-5	4.5	6.5	5.94	3.5	2.75	5	0.34	5.62	2.88	10
182-3	4.5	8.62	6.5	4.5	3.75	5.5	0.41	6.75	3.5	12.25
	8.5	8.62	6.5	4.5	3.75	5.5	0.41	6.75	3.5	12.25
213-5	8.5	9.5	8	5.25	4.25	7	0.41	7.94	4.5	13.69
254-6	8.5	11.25	11.25	6.25	5	10	0.53	9.5	5	17.94
284-6	12.5	12.25	12.25	7	5.5	11	0.53	11.37	5	21.31
324-6	12.5	14.25	13.75	8	6.25	12	0.66	12.22	5.5	22.19
364-5	12.5	15.75	14	9	7	12.25	0.66	13.2	6.12	24.31
404-5	12.5	18.5	16.62	10	8	13.75	0.81	16.39	6.88	29.97



DS10YBQCC-070921