



1.5WH-F

AVAILABLE MOUNTING CONFIGURATIONS

1.5WH-RP-F REDI-PRIME FRAME MOUNT
1.5WH-RP-EM REDI-PRIME ENGINE MOUNT
1.5WH-F FRAME MOUNT
1.5WH-EM ENGINE MOUNT

OPERATING LEVELS

MIN FLOW	50 GPM	11.4 m3/h
MAX FLOW	198 GPM	45.0 m3/h
DISCHARGE SIZE	1.5"	38.1 mm
SUCTION SIZE	2"	50.8 mm
MAX SPEED	2,800 RPM	2,800 RPM
SOLIDS HANDLING	.28"	7.1mm
MAX PRESSURE	175 PSID	1,207 kPa
SHUT-OFF HEAD	127' @ 54.98 PSID	38.7m @ 379.0 kPa
BEP HEAD	105' @ 45.45 PSID	32.0m @ 313.9 kPa
BEP FLOW	125 GPM	28.4 m3/h
BEP EFFICIENCY	73%	73%



A typical picture of the pump is shown. Please contact Cornell Pump Company for further details. All information is approximate and for general guidance only.

PARTS	CAST IRON BRONZE FITTED	ALL IRON	NSF - CERTIFIED
WEAR RING	BRONZE SAE 660	CAST IRON ASTM A48 CL30	ASTM B271 C95800 OR ASTM B505 C95800
IMPELLER	CAST IRON ASTM A48 CL30	CAST IRON ASTM A48 CL30	ASTM B148 C95800
VOLUTE	CAST IRON ASTM A48 CL30	CAST IRON ASTM A48 CL30	ASTM A48 CL30 GRAY IRON
SHAFT	SAE 1144 "STRESSPROOF"	SAE 1144 "STRESSPROOF"	SAE 1144 "STRESSPROOF"
SHAFT SLEEVE	BRONZE SAE 660	303 STAINLESS STEEL	303 STAINLESS STEEL
BACKPLATE	CAST IRON ASTM A48 CL30	CAST IRON ASTM A48 CL30	ASTM A48 CL30 GRAY IRON
PACKING	GRAPHITED ACRYLIC	GRAPHITED ACRYLIC	GRAPHITED ACRYLIC
MECHANICAL SEAL	T-1, BUNA-CARBON/CERAMIC	T-1, BUNA-CARBON/CERAMIC	T-1, BUNA-CARBON/CERAMIC
BEARING FRAME	CAST IRON ASTM A48 CL30	CAST IRON ASTM A48 CL30	ASTM A48 CL30 GRAY IRON

The 1.5 WH-F pump is designed with Cornell's renowned quality and durability. It features a 1.5" discharge and a 2" suction, enclosed multi-vane impeller and threaded (FPT) tangential single volute with oversized shaft for long life. Available in standard Cast-Iron Bronze Fitted, All Iron, or NSF-61 Certified configurations. The pump end mounts to F5 and EM5 heavy-duty modular bearing frames. Optional Redi-Prime or Venturi Prime priming system is available. Bearings are heavy-duty, grease lubricated, single ball bearings with a minimum of 20,000 hours bearing life.

- Industry-leading two-year warranty
- Industry-leading efficiencies
- Replaceable suction wear ring and shaft sleeve
- Heavy-duty modular bearing frame
- Grease lubrication standard - oil optional
- Large shaft and bearings
- RunDry™ option (Indefinite run dry capability)
- Optional Cycloseal® with T-1 mechanical seal
- SAE #5 engine mount available
- Available NSF-61 Certified



AGRICULTURE



FOOD



INDUSTRIAL



MINING



MUNICIPAL



OIL & GAS



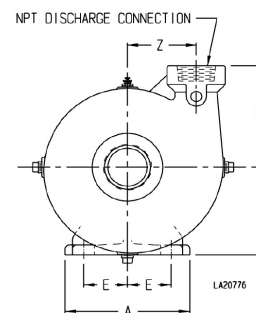
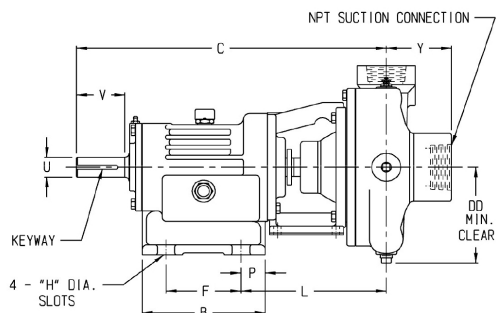
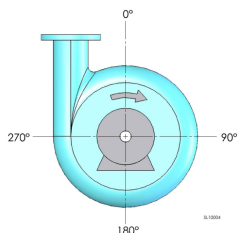
REFRIGERATION



RENTAL



1.5WH-F

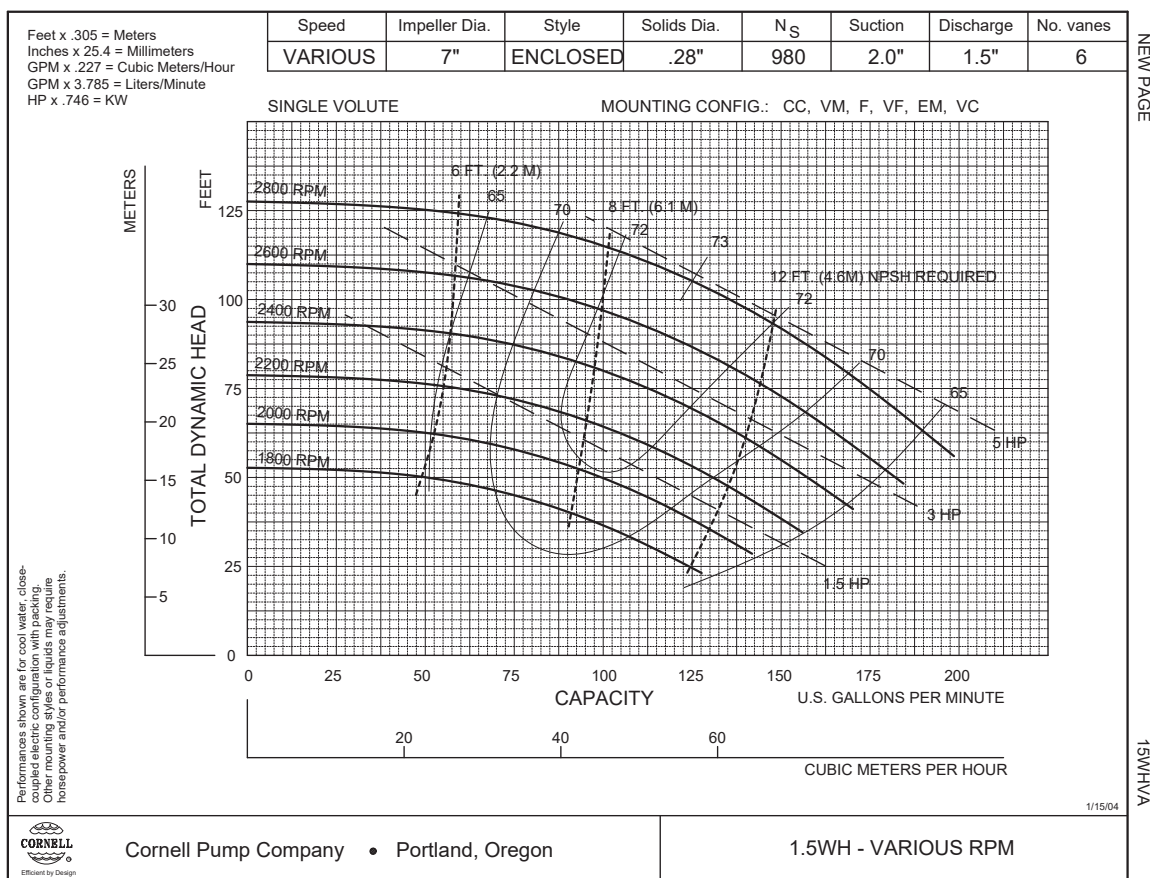
**NOTES:**

Discharge positions are viewed from the drive end.
Standard increments of discharge position are shown
in the chart below (DISCH. INCR.). Consult factory for
other discharge positions.

NOTES:

1. "V" Dimension is maximum useable shaft.
2. Frame mounting foot thickness is .62".
3. Do not use for construction unless certified.

PUMP DIMENSIONS																				
MODEL	FRAME	CONNECTION		DISCH. INCR.	A	B	C	D	DD	E	F	H	L	P	U	V	X	Y	Z	KEYWAY
		DISCH.	SUCT.																	
1.5WH	F5	1.5	2	90°	7.5	7.36	18.52	5.5	6.25	2.62	4.5	0.56	8.66	1.44	1.25	3	5	3.53	4.25	.25 x .12



Cornell Pump Company • Portland, Oregon

1.5WH - VARIOUS RPM

DS15WH-F-070921