

CORNELL PUMP COMPANY

# CO-PILOT™

INTEGRATED SCADA UNIT



CORNELL   
**Co-Pilot™**  
PANEL MOUNTED GATEWAY

# CO-PILOT™ INTEGRATED SCADA UNIT



Connect via Cell  
or Ethernet



4 Digital Inputs  
8 Analog Inputs



Real Time Data



CORNELL   
**Co·Pilot™**

## WHY THE CO-PILOT SCADA UNIT?

The Co-Pilot Integrated SCADA Unit not only shares the user-friendly web browser and app interface with our Cornell Co-Pilot units but also boasts an elevated level of sophistication. Employing 120VAC relays and a specialized power source, this panel is designed to oversee duplex pumping setups with unparalleled efficiency.

Equipped with dedicated timers and configurable alerts for its four digital inputs, this advanced panel goes beyond mere monitoring – it offers a comprehensive control system. Moreover, by leveraging the cellular gateway, users can opt for a fully remote option to access and view intricate pumping details effortlessly.

## USE THE INTEGRATED SCADA UNIT FOR:

- Live data monitoring
- High Float and Fault alerting
- Monitor pump usage on 2 pumps
- Automated reports
- Track historical pump usage

## CO-PILOT PANEL MOUNTED GATEWAY (PMG)

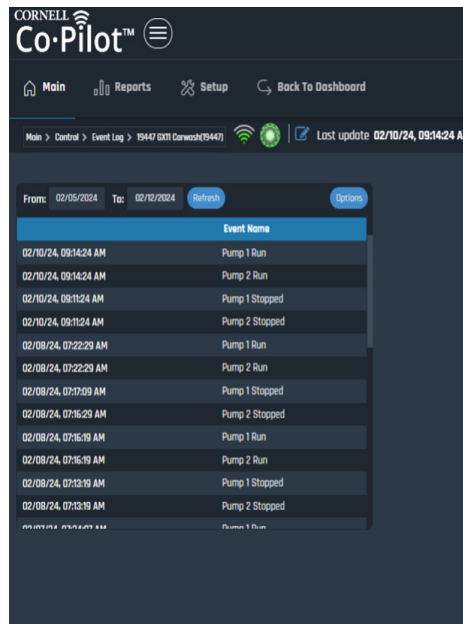
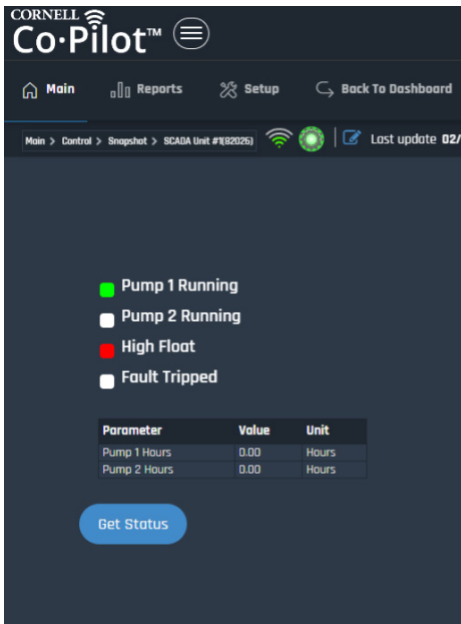
The Co-Pilot Integrated SCADA Unit harnesses the cutting-edge technology of the Co-Pilot PMG device, setting a new standard in sophistication. The PMG boasts superior capabilities, offering a host of additional inputs, including eight analog inputs, four digital inputs, and a relay output.

## CORNELL CO-PILOT ALLOWS YOU TO:

- Monitor pumps using the cloud and IOT
- Monitor duplex pumping setup
- View pump usage with historical data
- Enable live data when needed
- Receive real time alerting



# CO-PILOT™ SCADA UNIT SPECIFICATIONS



## TECHNICAL SPECIFICATIONS

### COMMUNICATION

- 4G LTE cellular cloud connectivity
- Ethernet Compatible
- Monitor all connected pumps from a single app
- GPS Location Information

### ON -BOARD MONITORING

- Modbus (RS-485)
- 4 Digital inputs with 120VAC relays
- 8 Analog inputs

### NOTIFICATIONS

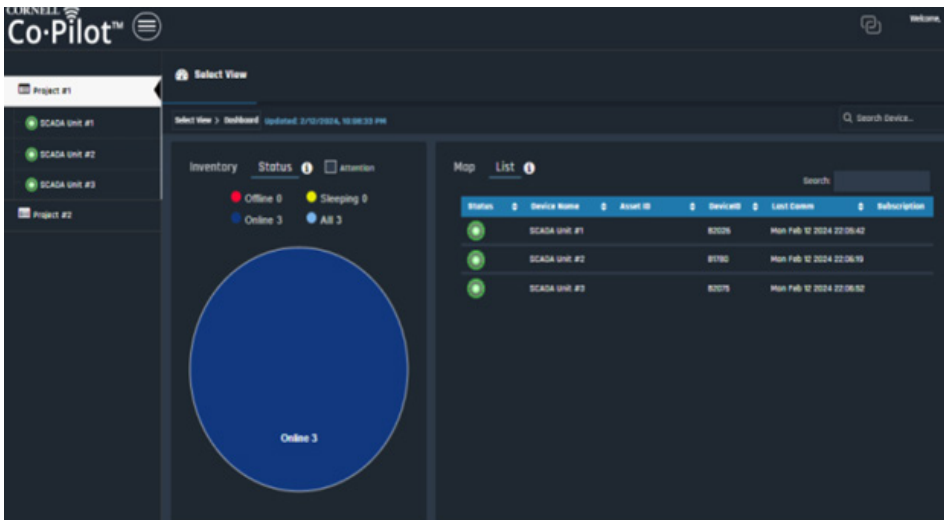
- Generate automatic reports
- Configurable alerts
- Service hours reached
- Pump start/ stop
- High float
- Fault tripped or phase lost

### DIMENSIONS/ OPERATIONS/ STANDARDS

- 12.15" x 6.46"x5.97" (308mm x 164mm x 152mm)
- UL certified upon request
- Temperatures from -22°F/ -30°C to 158°F/70°C

### POWER

- External power: 120VAC or 12-24 VDC option
- 500mA maximum



Co-Pilot desktop version screenshot.

**Get started at**  
**CORNELLPUMP.COM/CO-PILOT**

## SCADA: SUPERVISORY CONTROL AND DATA ACQUISITION

Supervisory control and data acquisition (SCADA) is a system of software and hardware elements that allows organizations to control and monitor industrial, municipal, and processes by directly interfacing with plant-floor machinery and viewing real-time data.

Since the mid-1970s, the term SCADA has emerged to describe municipal and industrial control systems. At that time, the systems were isolated and siloed. With the Cornell Co-Pilot Gateway, integration, information flow, and control flow across your organization leading to better understanding, execution, and efficiency.

With a SCADA system, municipal and industrial organizations can:

- Monitor, gather, process, and analyze real-time data
- Control processes locally or remotely
- Directly manage devices such as valves, switches, and motors
- Record activities, events, and upset conditions to logs

# CORNELL PUMP COMPANY MARKET & PRODUCT LINE



AGRICULTURE



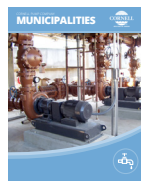
FOOD PROCESS



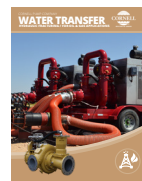
INDUSTRIAL



MINING



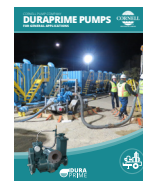
MUNICIPAL



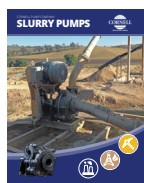
WATER  
TRANSFER



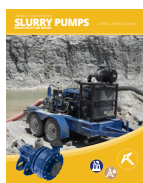
REFRIGERATION



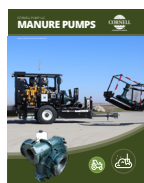
CONSTRUCTION



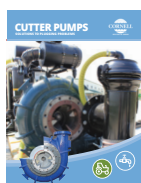
SLURRY



SLURRY SM



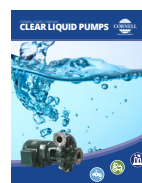
MANURE



CUTTERS



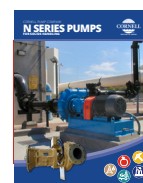
SELF PRIMING



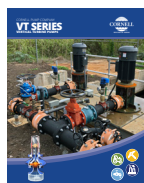
CLEAR LIQUIDS



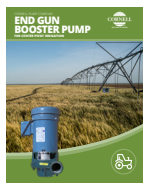
MX SERIES



N SERIES



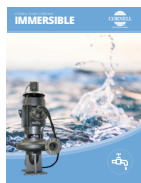
CYCLONE™



EDGE™



HYDRAULIC  
SUBS



IMMERSIBLE



CD4MCU



RUN-DRY™



PRIMING  
SYSTEMS



CYCLOSEAL®

Cycloseal® and Redi-Prime® are Registered Trademarks of Cornell Pump Company.

Cornell pumps and products are the subject of one or more of the following U.S.  
and foreign patents:

6,074,554; 6,036,434; 6,079,958; 6,309,169; 6,104,949.

24 - IO - BR - 201

**CORNELLPUMP.COM**  
©2024 CORNELL PUMP COMPANY

AUTHORIZED CORNELL PUMP DISTRIBUTOR



Certified to  
ISO 9001:2015



Cornell Pump Company  
Clackamas, Oregon, USA  
P: +1 (503) 653-0330  
F: +1 (503) 653-0338