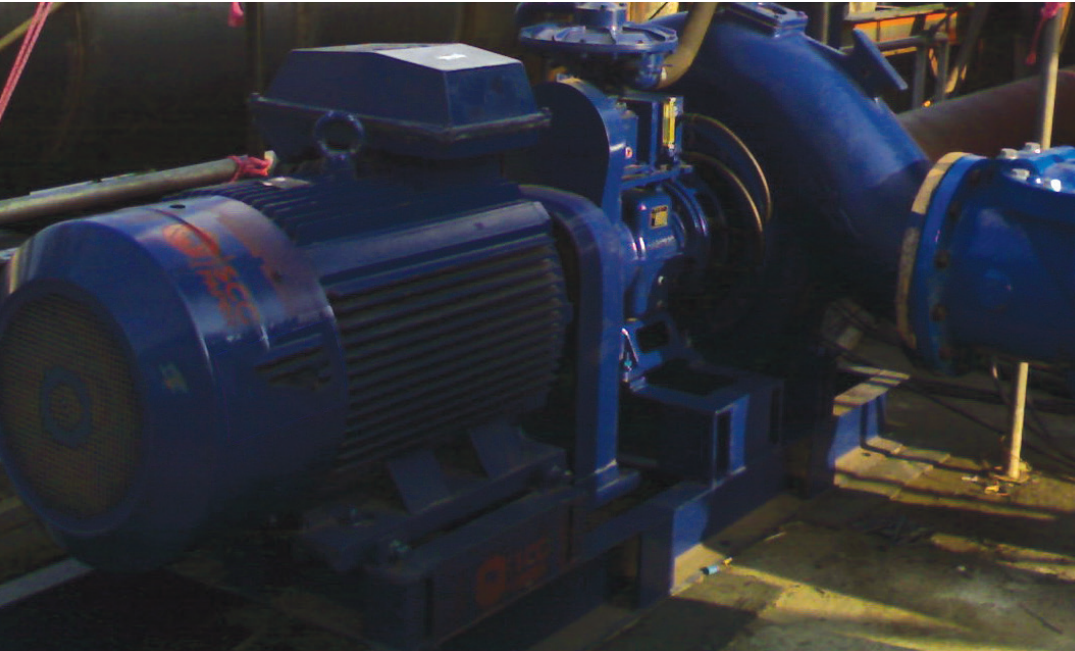




CORNELL PUMP COMPANY

APPLICATIONS

INDUSTRIAL



CORNELL'S 14NHG-RP-F18DB
DEWATERS MILLIONS OF GALLONS
DURING FLOODING

BUSINESS LENDS CORNELL PUMP TO THAI GOVERNMENT TO HELP EASE HISTORIC FLOODING

Site:
Bangkok, Thailand

Problem:
It was flooding, destroying lives, and disrupting businesses. Monsoon flooding in Thailand began in July 2011 and continued for months—pushing southward from the highlands to the capital. More than 500 people died, and 2 million more were disrupted.

A pump distributor in Bangkok was preparing a Cornell 14NHG-RP-F18DB pump for a customer when the worst flooding hit the capital city. The distributor's warehouse and production facility were filling with water as they raced to complete the fabrication of the pump system for the client.

Solution:
The pump was delivered to the client on October 20, 2011. They immediately lent the Cornell 14NHG-RP-F18DB, complete with an ABB 150 Horsepower 6P engine and another submersible pump, to the Thai government to help dewater one of the worst flooded districts, Samutsakorn.

The distributor set up the pumps, which were in place for over two weeks. Millions of gallons of water were removed from the flooded district during that time. The distributor and the customer were happy to help provide the pump, the Thai government appreciated the technical assistance and expertise, and Cornell Pump was pleased that one of our pumps again took an important role in alleviating a crisis.

Without the Cornell Pump and the graciousness of the customer in lending it out, it is expected that flooding would have been much worse—with a commensurately higher loss of life and property.