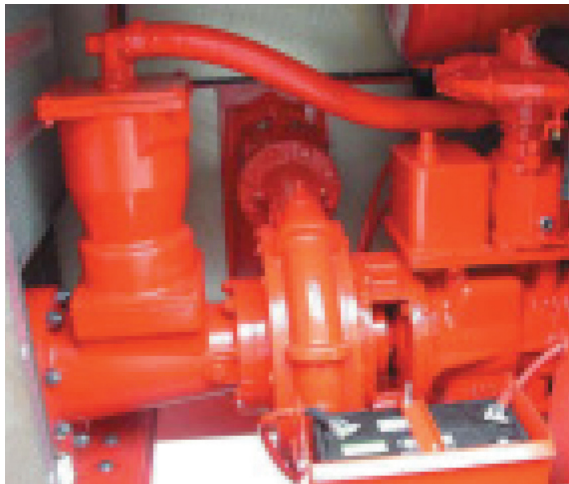




CORNELL PUMP COMPANY

APPLICATIONS

OIL & GAS



ON FIRE FOR MOROCCO - 4HC

4HC Redi-Prime® Engine Mount 18DB-3 pump serves as the heart of firefighting equipment in oil refineries.

After a devastating flood on the Maleh river, a Mohammedia, Morocco-based oil refinery had more than brackish water to clean up—the ensuing flood had sparked a severe fire in the refinery's storage area.

Shaken by the devastation, the refinery created an emergency fire wagon that could be rapidly deployed to fight fires and used in dewatering. A Cornell 4HC Redi-Prime® Engine Mount 18DB-3 pump was coupled with a Cummins engine and placed on a trailer to accomplish this dual purpose. Painted a bright "fire-engine" red, the pumps stand out. Able to be

rapidly moved around the facility, the pumps could quickly move thousands of gallons of water per minute to combat a potentially devastating fire. Using the attached hoses and system, the pumps can also serve as dewatering pumps should the storage area again be flooded.

The refinery is producing more than 125,000 barrels of oil daily and looking to expand. Having several of the 4HC pumps outfitted to fight fires helps them more effectively meet the risk concerns of the plant.

