



Following are general questions and answers for Pump School 2022. If you had other inquiries, please contact Cornell Pump at pumpschool@cornellpump.com. The categories break into meals, classes, travel, CEUs, virtual, and general logistics.

Unless stated, the assumption is that these answers are for those attending in-person. If you have questions about the virtual event, please review the virtual section of the FAQ.

MEALS

- 1) Can I attend the reception Monday, September 12, 2022?

Yes. All pump school registrants and spouses may attend the reception at the Benson Hotel. Heavy *hors d'oeuvres* will be served, along with drinks. Hours for the reception are 6:00 p.m. to 9:00 p.m.

- 2) What meals are provided with Pump School?

DATE	MEAL	LOCATION	FOOD
Monday, September 12th	Reception 6-9:00 p.m.	Benson	Heavy Hors d'oeuvres
Tuesday, September 13th	Lunch 12:00-1:00 p.m.	Hall 1	Sandwich Buffet
Tuesday, September 13th	Dinner 6:30-9:00 p.m.	PDX Art Museum	Dinner Entrees
Wednesday, September 14th	Lunch 11:30a.m.-12:30 p.m.	Factory Parking Lot	BBQ
Wednesday, September 14th	Cocktails 5:30-6:30 p.m.	Lobby	Drinks

- 3) Can I bring my spouse to the Tuesday dinner?

Yes. Spouses are welcome. We will be dining at the Portland Art Museum—if you are planning on doing so, please let us know, so we can get the head count correct for food orders.

CLASSES

- 4) What's the difference between basic and advanced classes?

The basic classes assume less familiarity with pumps, conditions and hydraulics. Many of the same topics (e.g. NPSHr and System curves), are covered in both sections. The advanced classes will begin with the expectation that those in attendance have some familiarity with the subject. You are free to move between the basic and advanced classes.

- 5) When do classes start/end?

Classes begin at 8:00 a.m. on Tuesday and go until 5:30 p.m. On Wednesday, the factory tour begins at 8:30 a.m.—buses will leave from the Benson at 7:45 a.m. If you choose to come back for afternoon classes at the Embassy Suites, classes will be over at 5:00 p.m. If you choose to stay at the factory for advanced training, the session will be over by 4:00 p.m. and the bus will



take you back downtown at 4:00 p.m. you should arrive downtown by 5:00 p.m. (expecting normal rush hour traffic.) For more details about timing, please consult your schedule handout.

6) [Can I switch between basic and advanced?](#)

Yes. You can choose the topics you'd like to attend. You can stay in either session of classes the entire time, or move between them. There is also an additional mining/ industrial track this year on day two. It is your choice as to which class to attend—we trust that you'll choose the set of classes that most benefits your learning.

HOTEL ACCOMODATIONS

7) [What hotel options are there for Pump School?](#)

Cornell Pump reserves a block of rooms at the Benson Hotel (309 SW Broadway Portland, OR 97205). There are a limited number of rooms available at the Pump School Attendee rate, so it is advised to book your rooms early. There are also a number of other hotels near the Benson, including the Courtyard Marriott at 550 SW Oak St, and the Embassy Suites el at 319 SW Pine St.

TRAVEL

8) [How do I get from the airport on MAX \(or what are my options, e.g. car rental\)](#)

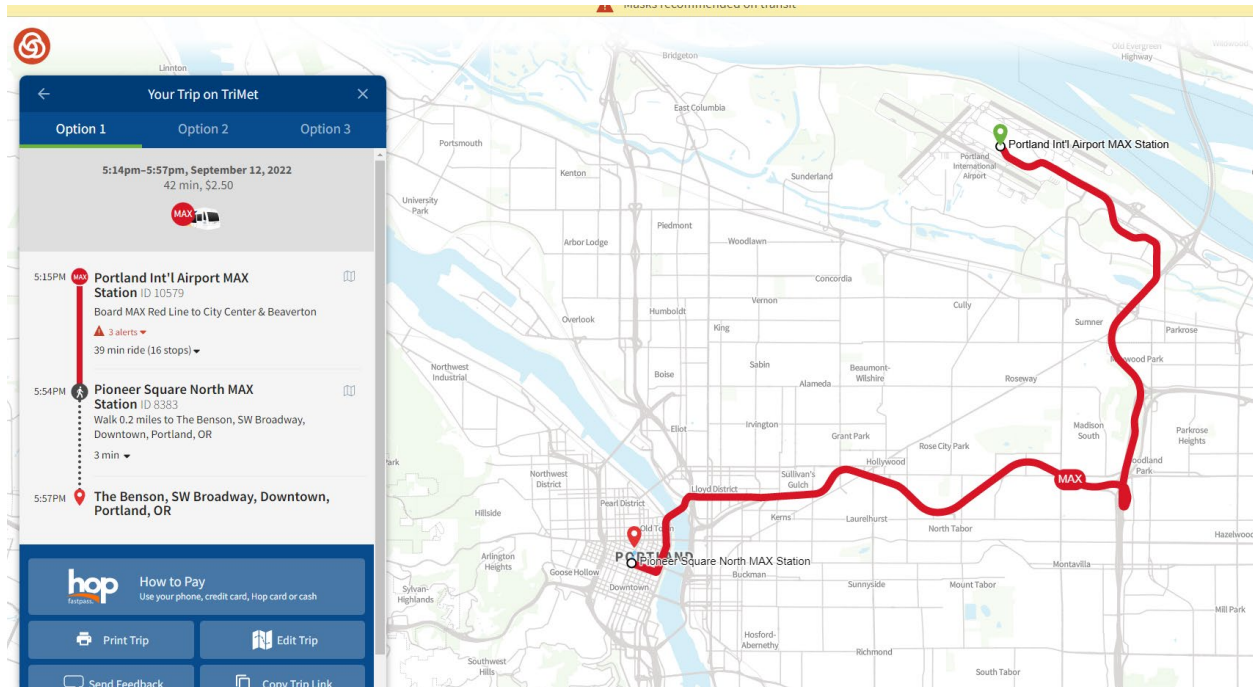
Cornell does not have an official pick up/ return to the airport. We choose the hotel we're at because the accommodations are nice AND because it is close to the MAX rail line that links the airport with downtown. You can get on the light rail train at the airport and ride to a station within two minutes of the hotel. Rides cost \$2.50 each way (with daily and weekly passes available for purchase. Passes can be download right to a smart phone.)

The red line is the line to/from the airport https://trimet.org/ride/stop_schedule.html? LOCALE =en&route=90&stop_id=10579&sort=time&month=9&day=12&submit=Select and many travelers use it. You can get aboard easily with your luggage.

A hypothetical itinerary is below for around 5:00pm on a Monday from the airport to hotel. The TriMet trip planner is online at <https://trimet.org/home/planner>; You could use the trip planner for your appropriate time/day. Trains run every 15 minutes.

Alternatively, shuttle service is available for about \$20, Uber for about \$30, taxi for about \$45 (depending on traffic), limos for about \$80, and rental cars from \$70 to \$200 per day depending on model, plus \$22+ a day to valet park. Some options are available here: <https://www.pdx.com/PDX/GroundTransportation>

On the trip back to the airport, many participants are leaving at the same time, and they often share cabs, splitting the cost. The other transit options (rail, shuttle, etc.) would be available as well.



9) Is transportation provided to/from the factory?

Yes. We do provide the transportation (buses with at least two Cornell staff on each bus) to and from the factory on Wednesday, September 14, 2022. Cornell's factory is approximately 14 miles from downtown. That day participants have the option of returning to classrooms for further sessions, or staying later at the factory and watching advance assembly. In either scenario, we'll get participants to and from the factory.

Wednesday morning at Embassy Suites, busses load for Cornell at 7:30 a.m. and depart for the factory at 7:45 a.m. Busses should arrive at the factory by 8:15 a.m. Busses will depart at 12:45 p.m. for Embassy Suites—if you are planning on attending the presentation classes in the afternoon, you should be on that bus. If you are staying for the afternoon advance hands on class, the bus will depart at 4:30 p.m.

10) Can you drive to the factory?

Yes. You may drive to the factory instead of riding the bus if you choose. The address of the factory is 16261 SE 130th Ave Clackamas, OR 97015. Please arrive between 8:00 and 8:20 a.m. to take the tour and begin hands-on classes. We'll all be entering the factory in groups at 8:30 a.m. Parking is available at the factory.



CEUs

11) What are CEUs?

Continuing education credits, units, or hours (listed as CEUs forward) are training credits awarded by an agency that has vetted a program or presentation, and believe it will impart value to members, especially in keeping up training and learning in the area of expertise. The award agency assigns a value of credit to the classes.

Cornell is proud to again offer CEUs from OESAC, the Oregon Landscape Contractors' Board, and Washington DOE.

12) What do I have to do to earn CEUs

To earn CEUs you must sign in and out of class every day, near the registration table. We'll have special clip boards with the tracking sheet. Once you have completed your classroom or hands on training on Wednesday, September 14th, and have used the sign in/out form, you'll be able to choose between OESAC, LCB, and DOE certificates.

Cornell will also provide all attendees with a certificate of completion for attending Pump School 2022.

13) Are other CEUs offered?

Cornell has applied for confirmation from OESAC and LCB. Their certification may be transferable to other organizations, who have a similar role in other states. We have previously applied for other organization's certification (e.g. California CWEA and Massachusetts DEP). If you are looking for CEUs from states other than Oregon, we will work on applying. Your help in getting form and appropriate contacts at the agency is appreciate.

In any case, CEUs other than OESAC, LCB, or DOE should be sought as soon as possible. Many organizations will only grant status before the class takes place.

VIRTUAL SCHOOL

14) What is virtual pump school?

Given covid restrictions still in effect for some areas, and peoples personal preferences to avoid crowds, Cornell is offering a virtual pump school this year. It is an option on your registration. It allows an attendee to see the school without having to be at the school.

15) Is Virtual Pump School the Same as in-person?

Yes and no; attendees will have access to all the same presentations* as the in-person attendees, and be able to switch between basic and danced classes as they see fit. Virtually attendees will miss the camaraderie and networking opportunities that are found in the in-person event though; and certainly the copious amounts of food. *Track 4 on Day 2; Cornell Selling sessions will not be streamed.



16) When will I get my access code?

Virtual Attendees will receive their codes on Friday September 9th, 2022.

17) When are recordings available?

Recordings of the sessions will be available by end of day Thursday September 15th, 2022, and probably before that.

18) How long are recordings available?

Recordings will be available for review for three months after Pump School ends.

19) Whom should I contact if I am having trouble viewing Virtual Pump School?

While we are hosting with prevalent and easy to use Zoom Events, we realize that connection issues can sometimes arise. If you need help with your connection, please see e-mail virtual@cornellpump.com (this e-mail will only be operational during pump school)

GENERAL LOGISTICS

20) What things should I do in Portland while I'm here?

Portland offers eclectic night life, a vibrant food scene, and close location to great fishing, hiking, beaches, and mountain getaways. Depending on what transportation you have available and your personal free time, Portland has many fun experiences for you to enjoy. Close to the hotel though are the world-famous VooDoo Doughnuts—the line can be up to two blocks long to enjoy these fanciful doughnuts such as bacon topped maple bar, fruit loop covered crueller, and grape ape[®] glazed; made with Grape Koolaid[®] powder. Chinatown, with Lan Su Chinese gardens is also very close by. If you are looking to indulge in delicious food, try visiting one of Portland's many food carts. As the epicenter of the food cart revolution, Portland is home to more than 600 food carts. Several collections of carts (pods) are only a few blocks from the hotel. For a few dollars, you can try a world of food. Once you finish your food, try visiting Portland's lively beer scene. There are five breweries within easy walking distance of the Benson, and many more a cab, Uber, or MAX ride away.

Link to the Portland Visitors Bureau: <http://traveloregon.com/cities-regions/greater-portland/>

21) When is Pump School 2023?

Pump School 2023 is tentatively set for September 12 & 13, 2023. This is subject to change.

22) When do I get presentations/handouts?

You'll receive all the classes (day one and two) presentations on a memory stick at the end of pump school. You have a condensed hydraulic data book, Installation and Care Guide, and Hydraulic Seminar workbook in your welcome packet. Brochures and additional materials are available at near the registration table.

Cornell Pump Company
16261 SE 130TH Ave.
Clackamas, Oregon 97015 USA



www.cornellpump.com
Phone: (503) 653-0330-0330
Fax: (503) 653-0338-0338

23) Do you offer refunds?

We realize that sometime plans change. We allow refunds through September 1, 2022. After that we are not able to offer a refund. We are able to transfer an attendees registration to someone else.

24) When is the last day to register?

Registration is open until we are sold out, or through August 21, 2022, whichever comes first. We often sell out in July, so if you would like to attend, we encourage you to sign-up as soon as possible

25) Why do the registrations sell out?

To provide the highest quality experience and education for our attendees, we cap the maximum number of students for the in-person event. We have found the factory training sessions are especially uncomfortable if we exceed our maximum attendee threshold. If you missed the opportunity to register for the in-person event, we are offering virtual access to school, so you can listen to the same speakers and view their presentations.