

AVAILABLE MOUNTING CONFIGURATIONS

4HC-CC CLOSE-COUPLED
4HC-VC VERTICAL CLOSE-COUPLED

OPERATING LEVELS

MIN FLOW	130 GPM	29.53 m3/h
MAX FLOW	1,520 GPM	345.23 m3/h
DISCHARGE SIZE	4"	101.6 mm
SUCTION SIZE	8"	203.2 mm
SOLIDS HANDLING	.62"	15.75 mm
MAX SPEED	1,800 RPM	1,800 RPM
MAX PRESSURE	175 PSID	1,206.58 kPa
SHUT-OFF HEAD	310' @ 134.2 PSID	94.49 m @ 925.28 kPa
BEP HEAD	280' @ 121.21 PSID	85.34 m @ 836.71 kPa
BEP FLOW	1,380 GPM	313.43 m3/h
BEP EFFICIENCY	76%	76%



A typical picture of the pump is shown. Please contact Cornell Pump Company for further details. All information is approximate and for general guidance only.

PARTS	ALL IRON
WEAR RING	CAST IRON ASTM A48 CL30
IMPELLER	CAST IRON ASTM A48 CL30
VOLUTE	CAST IRON ASTM A48 CL30
SHAFT	CARBON STEEL
SHAFT SLEEVE	416 STAINLESS STEEL
MECHANICAL SEAL	T-2, BUNA, CARBON VS CERAMIC/STAINLESS
BACKPLATE	CAST IRON ASTM A48 CL30
MOTOR	OPEN DRIPPROOF - STANDARD; TEFC AND OTHERS - OPTIONAL

The 4HC pump is designed with Cornell's renowned quality and durability. It features a 4" discharge, 8" suction, enclosed multi-vane impeller, and flanged tangential single volute. Available in All Iron. Shower Curtain shield protects close-coupled motor.

- Industry-leading two-year warranty
- Industry-leading efficiencies
- Standard cast iron construction
- Back pull-out design
- Replaceable suction wear ring and shaft sleeve
- "Shower curtain shield" bearing protection
- Low operating costs
- RunDry™ option (Indefinite run dry capability)
- Cycloseal® with T-2 mechanical seal



AGRICULTURE



FOOD



INDUSTRIAL



MINING



MUNICIPAL



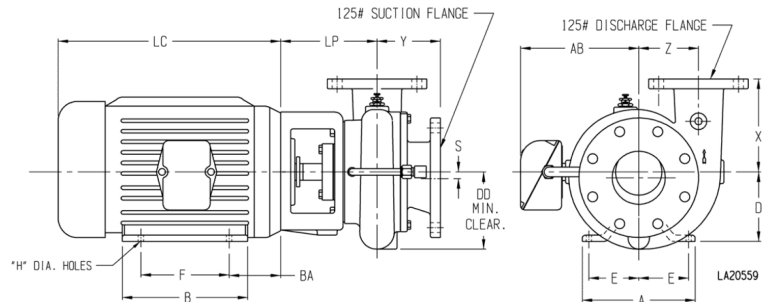
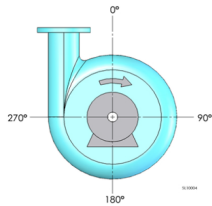
OIL & GAS



REFRIGERATION



RENTAL



NOTES:

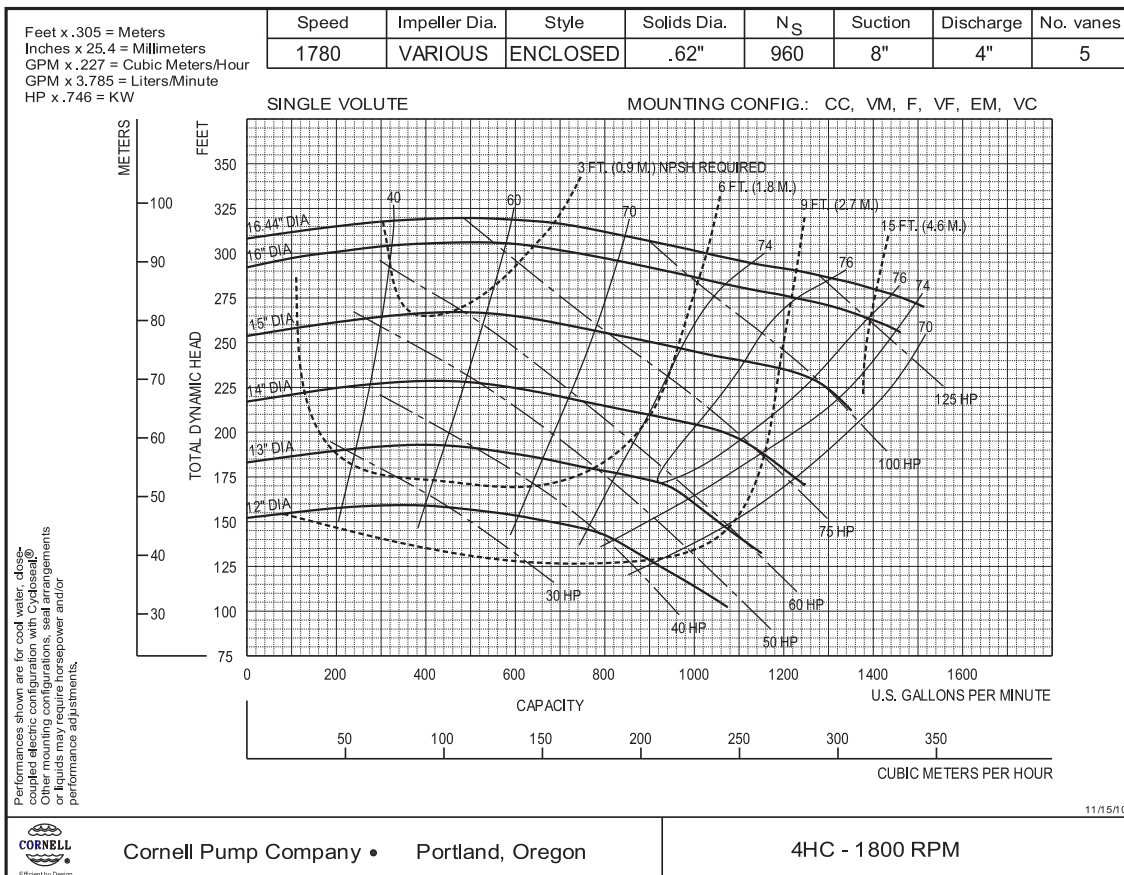
Discharge positions are viewed from the drive end.
Standard increments of discharge position are shown in the chart below (DISCH INCR). Consult factory for other discharge positions.

NOTES:

1. Motor dimensions are for ODP motors and may vary depending on models and manufacturer.
2. Flange connection dimension can vary $\pm .12$ inch.
3. Do not use for construction unless certified.

PUMP DIMENSIONS									
MODEL	CONNECTION		DISCH. INCR.	AK DIM.	DD	S	X	Y	LP
	DISCH.	SUCT.							
4HC	4	8	90°	12.5	12.62	0.88	11	10.88	11.19

MOTOR DIMENSION										
MOTOR FRAME	AK DIM.	A	B	D	E	F	H	AB	BA	LC
213-5	8.5	9.5	8	5.25	4.25	7	0.41	7.94	4.5	13.69
254-6	8.5	11.25	11.25	6.25	5	10	0.53	9.5	5	17.94
284-6	12.5	12.25	12.25	7	5.5	11	0.53	11.37	5	21.31
324-6	12.5	14.25	13.75	8	6.25	12	0.66	12.22	5.5	22.19
364-5	12.5	15.75	14	9	7	12.25	0.66	13.2	6.12	24.31
404-5	12.5	18.5	16.62	10	8	13.75	0.81	16.39	6.88	29.97
444-5	16.5	21.5	19.5	11	9	16.5	0.81	19.06	7.5	31



NEW PAGE

4HC18