

EWA Beach WWPS Upgrade

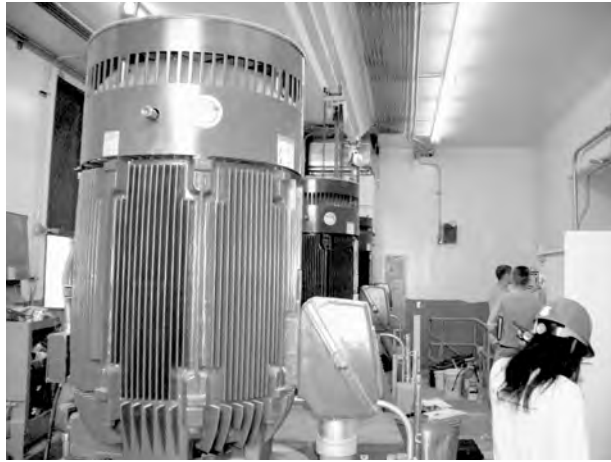
June saw the startup of the EWA Beach Pump Station just west of Pearl Harbor Hawaii, with three 14NHGA-VF 18 DB vertical frame mounted pumps, intermediate line shafts, 300 HP 1200 RPM TEFC motors and flywheel assemblies operated with VFD drives. Operational duty points varied from 6300 GPM @ 102 ft. TDH to 1720 GPM @ 50 ft. TDH.

The startup team included Jeff Meiners and Jim Weisenburg from Cornell, Milton Choy of H2O (our local representative in Hawaii), Justin Cook from Toshiba, Shane Lau of American Piping and Boiler (contractor), Ken Mashima of Thermal Engineering, and various other engineers and inspectors from the City and County. Start up included final inspection and field testing of the units in preparation for operational turn over to the city.

The testing portion required running the pumps at five duty points on the curve to confirm compliance with factory testing results and compatibility of the pumps and motors with the drives and controls. Vibration tests and analysis were also completed. The pumps ran as advertised and were received with high marks by everyone present. This installation will provide another excellent reference for Cornell.

The training portion of the startup was conducted by Jeff Meiners, Director of Engineering, and involved general system startup and pump overview, field test protocol, operation, preventative maintenance and pump repair.

This project was the result of a true Cornell team effort from various individuals, most notably Butch Veatch who coordinated the vast majority of the work as Project Manager. Everyone's efforts helped make this a successful project.



EWA motor/control floor



View from 2nd floor



Pumps #2 and #3 in operation



Testing Pump #1



CORNELL PUMP COMPANY
16261 SE 130TH AVE
CLACKAMAS, OR 97015
503-653-0330
WWW.CORNELLPUMP.COM