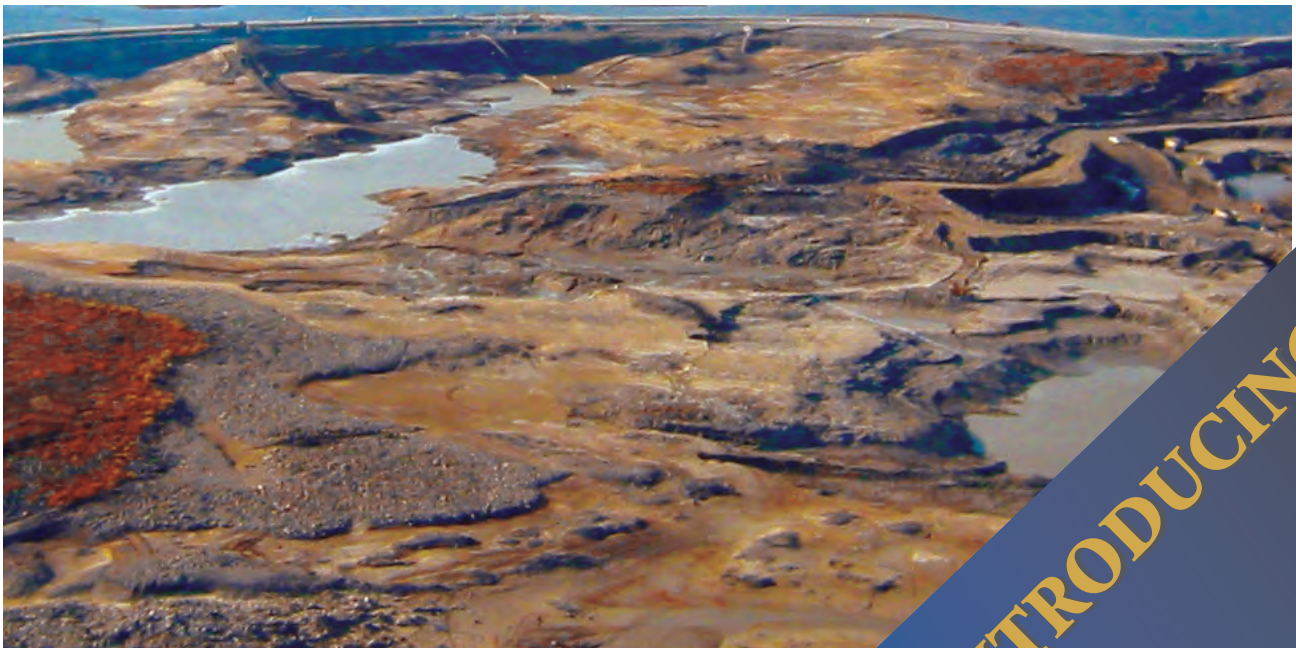
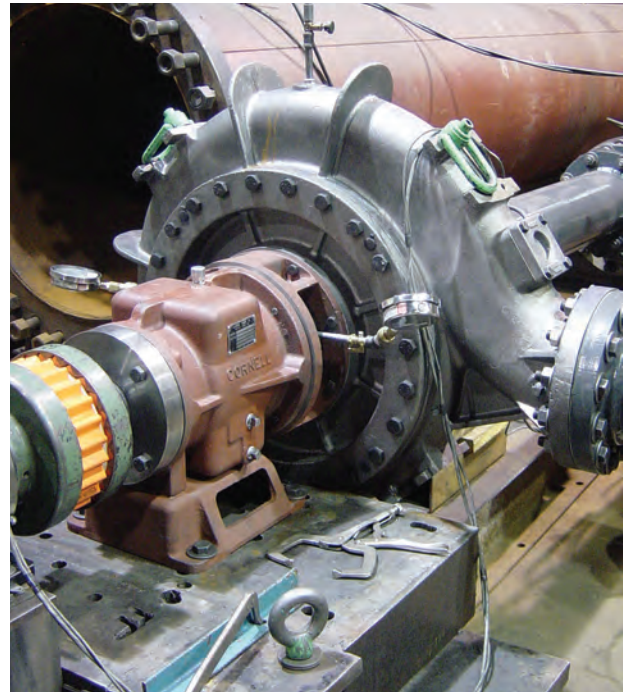




P R O D U C T D A T A S H E E T

CORNELL PUMP COMPANY

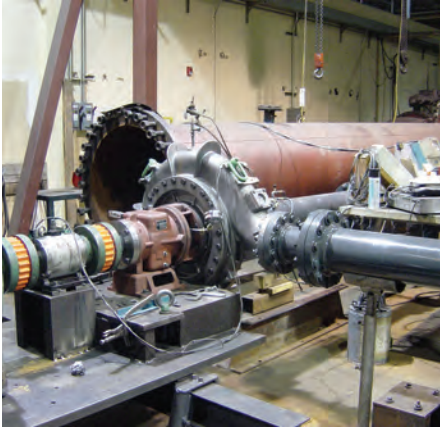
High Head Mining Pumps



INTRODUCING ...

A NEW LINE ...

of High Head Mining Pumps



APPLICATION

Cornell has incorporated many unique and innovative design features into its mining pumps, while maintaining its position in the industry as the leader of heavy-duty, low maintenance units. Cornell's mining pumps have been used successfully in a variety of mining and dewatering applications. These new pumps are designed specifically to handle high head applications while providing a long service life.



PRODUCT DIVERSITY

Many Cornell innovations have evolved from our commitment to the mining market and our ongoing effort to work with the industry in providing solutions for mining and dewatering applications.

- High Operating Pressures
- High Flow Requirements
- High Efficiency
- Dependable, High Quality Construction

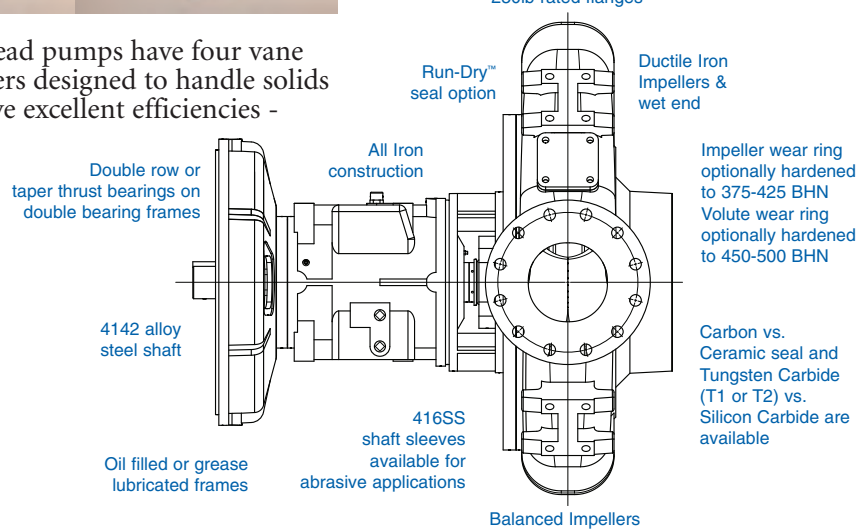
ENCLOSED IMPELLERS



The new high head pumps have four vane enclosed impellers designed to handle solids up to 2" and have excellent efficiencies - up to 75%.

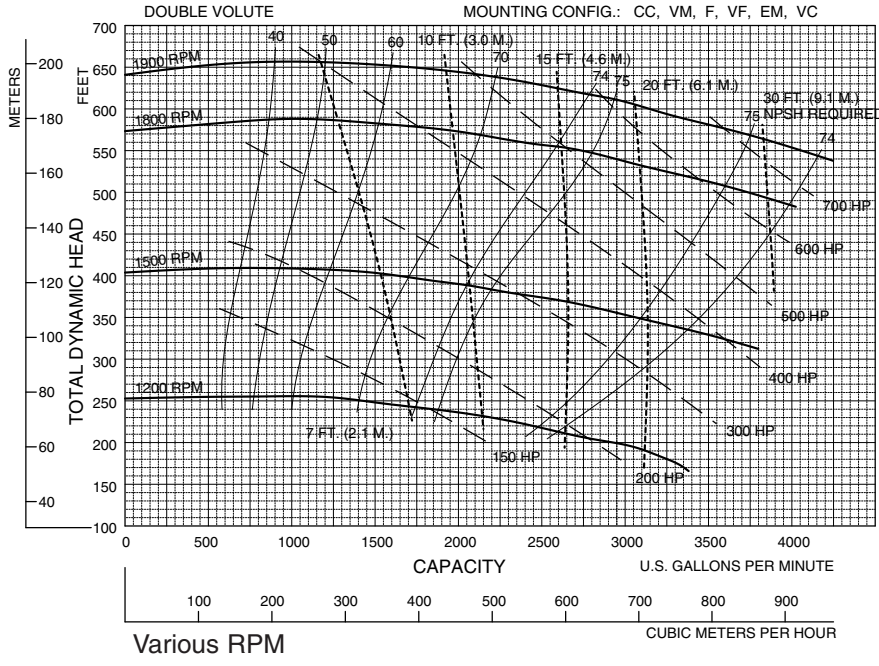
MOUNTING STYLES AVAILABLE

- Horizontal Frame Mount
- SAE Engine Mount



6x8x22

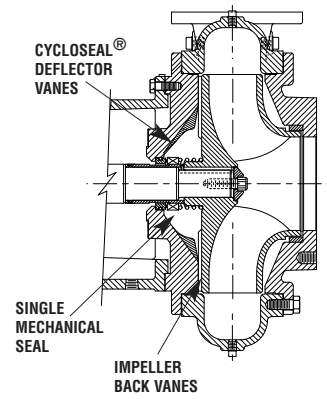
Speed	Impeller Dia.	Style	Solids Dia.	N _S	Suction	Discharge	No. vanes
VARIOUS	21.95"	ENCLOSED	2.00"	709	8"	6"	4



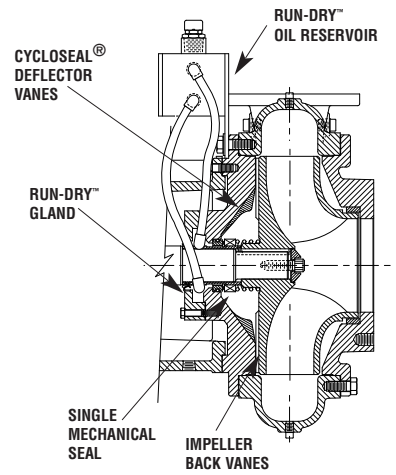
Performances shown are for cool water, close-coupled electric configuration with Cyclo Seal®. Other liquids may require horsepower and/or performance adjustments.

7/25/08

CYCLOSEAL®

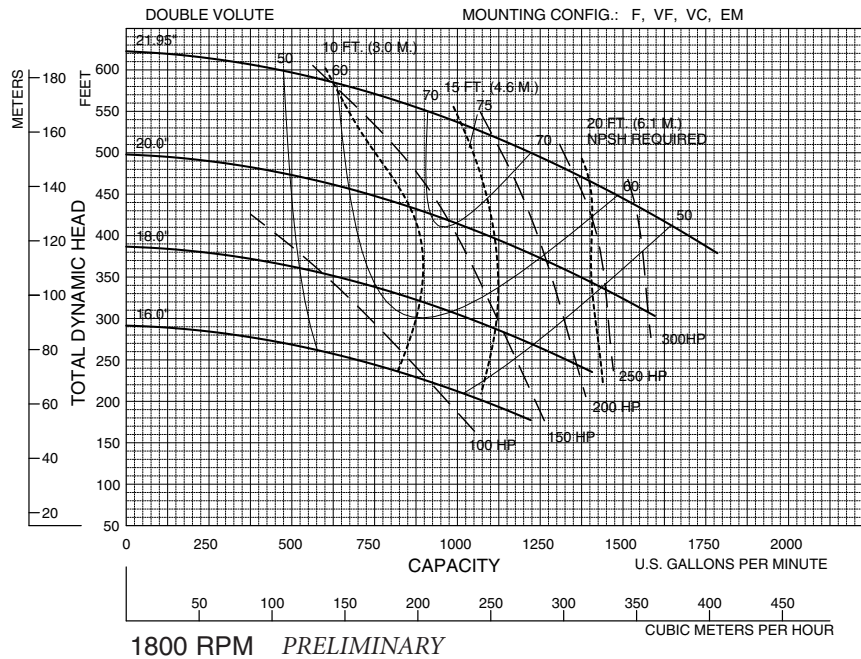


RUN-DRY™ OPTION



4x6x22

Speed	Impeller Dia.	Style	Solids Dia.	N _S	Suction	Discharge	No. vanes
1770	VARIOUS	ENCLOSED	1.38"	552	6"	4"	4

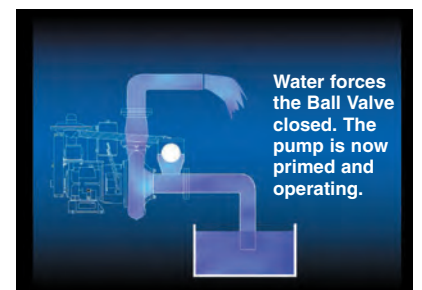
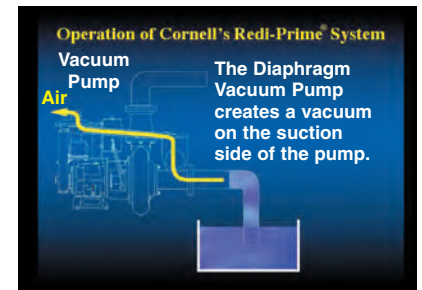


Performances shown are for cool water, high-zonal frame configuration with Cyclo Seal®. Other liquids may require horsepower and/or performance adjustments.

9/8/08

REDI-PRIME® SYSTEM

- Vacuum Assist (Diaphragm) Pump
- Patented Cyclo Seal® & Run-Dry™ features
- Fully automatic, compact, self-priming
- High Hydraulic Efficiencies



3x4x19

Speed	Impeller Dia.	Style	Solids Dia.	N _S	Suction	Discharge	No. vanes
1770	VARIOUS	ENCLOSED	.75"	307	4"	4"	4

COMING SOON...

1800 RPM PRELIMINARY

Performances shown are for cool water, high-zonal frame configuration with Cyclo Seal®. Other liquids may require horsepower and/or performance adjustments.

9/10/08



CERTIFIED TO ISO 9001:2000



Cornell Pump Company

P.O. Box 6334 • Portland, Oregon 97228-6334

Phone: (503) 653-0330 • Fax: (503) 653-0338

web site: www.cornellpump.com • e-mail: info@cornellpump.com