

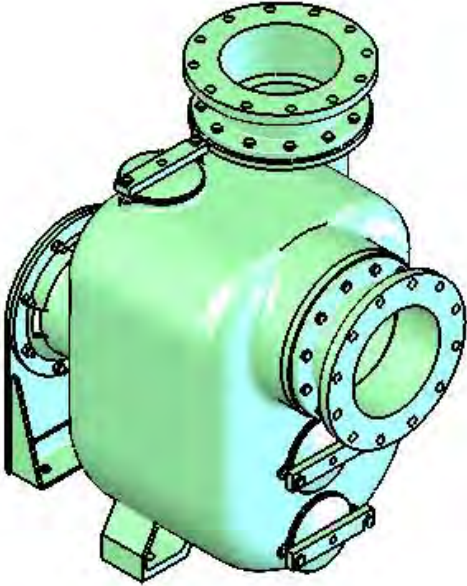


Efficient by Design

# 12SJ16-F

## SELF PRIMING TRASH PUMP

### PRODUCT CAPABILITIES



Size	12" x 12"
Capacities To	6000 GPM
Total Dynamic Heads	95 Ft.
Solids Handling	2.75" Dia
Repriming Lifts To	25 Ft.
Flanges	12" ANSI 125lb
Impeller	Semi-open, 4 Vane Trash Handling
Approx. Weight	1892lb
Bearing Housing	Heavy Duty Ball Bearings - grease lubricated
Mounting Options	Pedestal Frame Mount, Base Mount

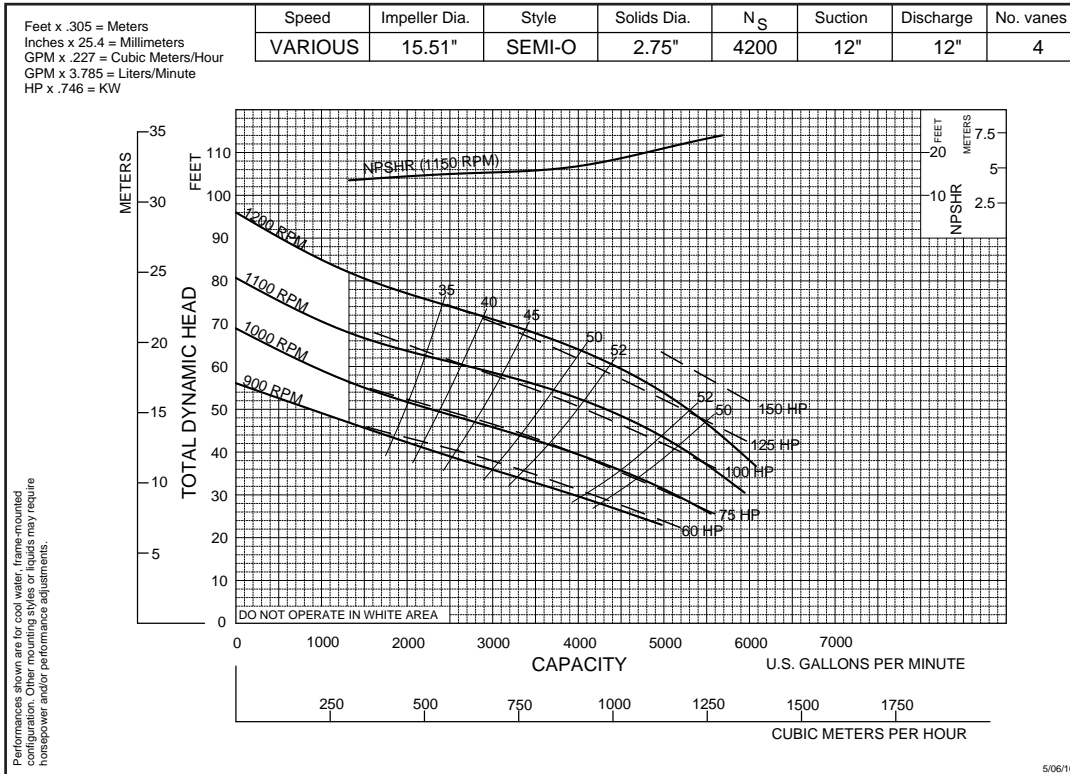
### MATERIALS OF CONSTRUCTION

- ✓ Shimless impeller clearance adjustment
- ✓ Easily removable coverplate
- ✓ Back pullout rotating assembly
- ✓ Atmospheric barrier and lip seal
- ✓ Volute passes full solid size
- ✓ Exclusive rubber lined wear plate
- ✓ Easily replaceable suction check valve
- ✓ Heavy duty bearings
- ✓ Heavy duty castings
- ✓ Solids handling impeller
- ✓ Silicon-Carbide seal w/ grease lubrication
- ✓ Rapid Self-Priming
- ✓ No need for discharge check valve
- ✓ Optional casing heater

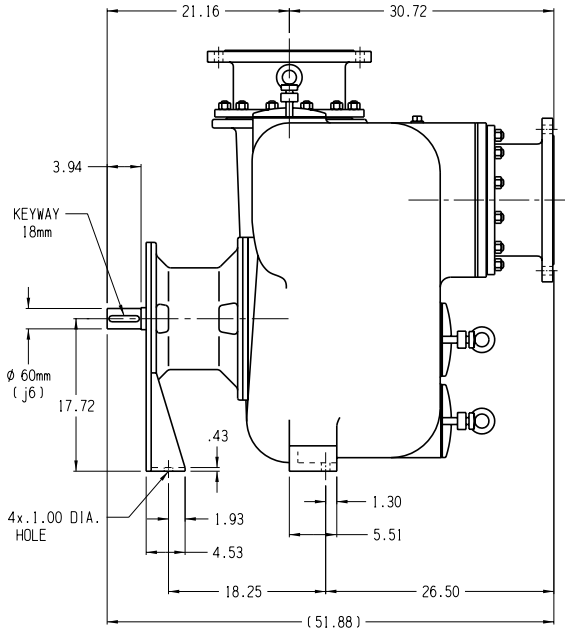
Materials	All Iron Volute & Impeller or Hard Iron Fitted* or 316SS Fitted* or Bronze Fitted*
Shaft	4130 Steel or Duplex Stainless Steel*
Bearings	Pump End: Ball Bearing Drive End: Ball Bearing
Wear Plates	Abrasion resistant rubber or Stainless Steel* or Hardened Iron* or Bronze*
Gaskets	Buna, Paper or Viton*
Suction Check Valve	Viton or Nitrile Rubber
Mechanical Seal	Silicon-Carbide Seal w/ grease lubrication

\*optional  
Other material available

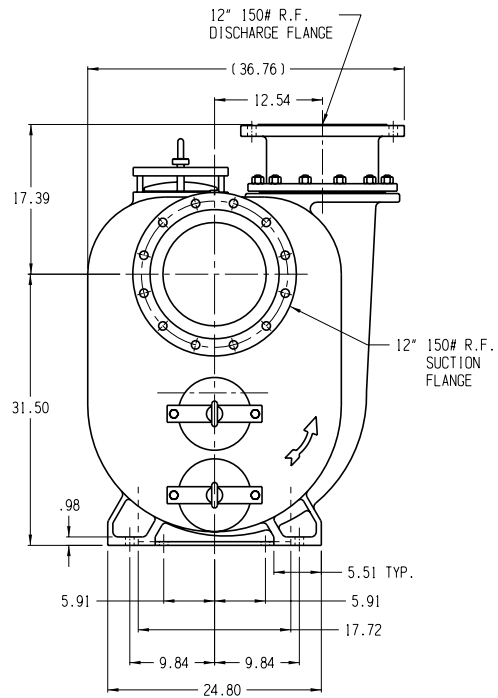
# 12SJ16-F SELF PRIMING TRASH PUMP



12SJ16 Threaded



12SJ16 Threaded



Other mounting configurations available