

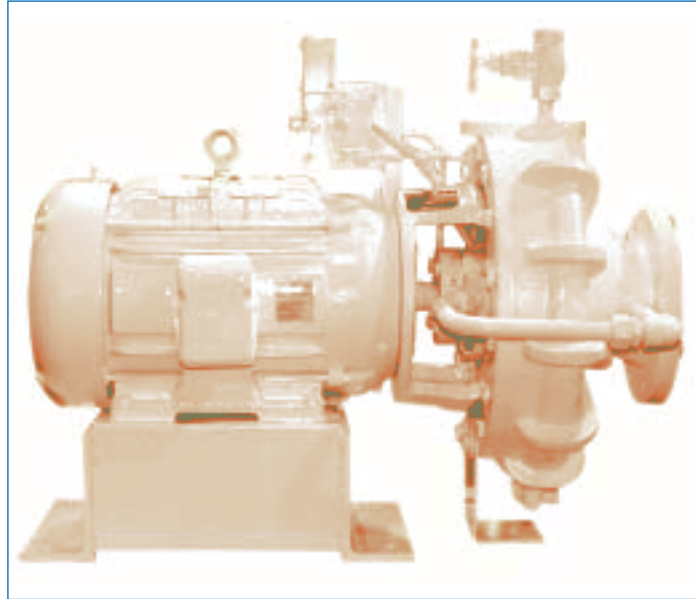


CORNELL PUMP COMPANY

Refrigerant Pump 3CB

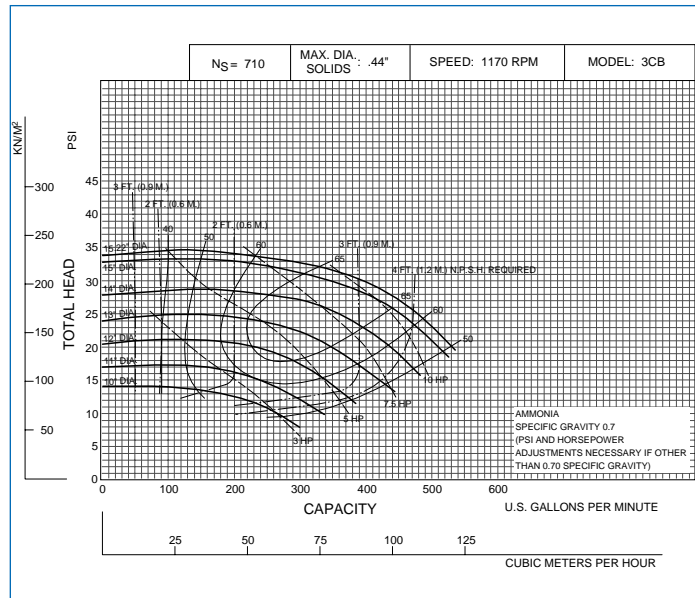
PUMP SPECIFICATION

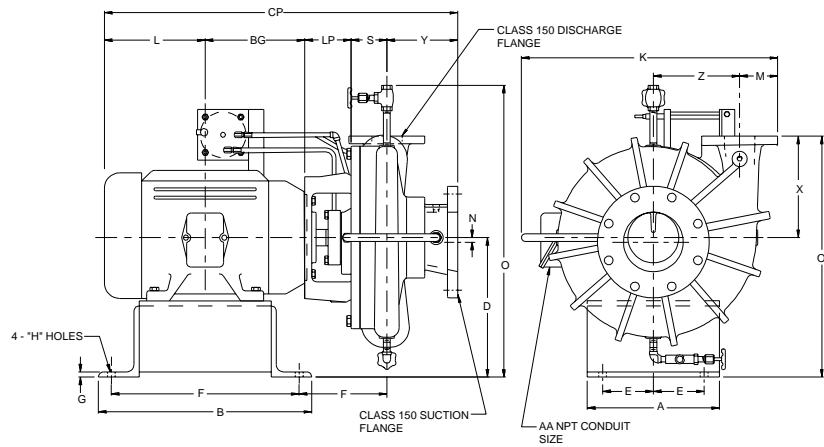
- 3CB Close coupled refrigerant pump
- 6" x 3" Class 150 Flanged suction & discharge
- Constructed of ASTM A536 60-40-18 Ductile Iron
- Industry leading two year warranty
- Six pole (1200/1000RPM) operating speed
- Optional mounting configurations available
- Polar white
- **Mechanical Seal:**
John Crane, 1.62", T-2, double mechanical shaft seal with pressurized barrier fluid lubrication system, low oil limit switch, and seal chamber heater to maintain proper barrier oil viscosity
- **Motor Specification:**
Close coupled to a totally enclosed fan cooled, refrigerant atmosphere, hostile environment, premium efficiency motor, with class "F" installation; suitable for VFD applications



FEATURES & BENEFITS

- **Refrigerant Emission Free™ Sealing Technology**
 - an ultra-reliable system consisting of two mechanical seals mounted back to back
 - inboard seal prevents escape of refrigerant from the pump casing
 - outboard seal acts as a fail-safe or backup, and provides containment of a system compatible barrier fluid.
- **NPSHR**
 - exceptional NPSHR characteristics
 - characteristics are enhanced throughout entire operating range due to the single stage impeller and six pole operating speed
- **Vapor Entrainment**
 - seals are oil lubricated, and do not rely on the presence of pumpage for lubrication or cooling
 - the double mechanical sealing system allows the pump to continue to run until the system stabilizes and the pump reprimed itself - nuisance-tripping is avoided





PUMP DIMENSIONS

Model	NEMA Frame	CONNECTION			A	B	D	E	F	G	H	J	K	M	N	O	R	S	X	Y	Z	LP	OP
		Disch.	Suct.	Type																			
3CB	213-215	3.00	6.0	FLG.	13.0	21.0	13.75	5.0	18.50	0.50	0.75	1.25	25.25	3.75	0.44	28.75	6.62	2.62	10.00	7.00	8.50	5.25	23.75
3CB	254-256	3.00	6.0	FLG.	13.0	21.0	13.75	5.0	18.50	0.50	0.75	1.25	25.25	3.75	0.44	28.75	8.62	2.62	10.00	7.00	8.50	5.25	23.75
3CB	284-286	3.00	6.0	FLG.	13.0	21.0	14.50	5.0	18.50	0.50	0.75	1.25	25.25	3.75	0.44	29.50	10.12	2.62	10.00	7.00	8.50	5.25	24.50

MOTOR DIMENSIONS

HORSEPOWER 1200 RPM	NEMA Frame	L	BG	AA	See Note No. 3
5.0	215	8.81	8.00	1.00	CP=
7.5	254	9.92	10.00	1.00	CP=
10.0	256	9.92	10.00	1.00	CP=
15.0	284	12.69	9.62	1.50	CP=
20.0	286	12.69	9.62	1.50	CP=

Notes:

1. Motor dimensions are TEFC NEMA Standard
2. Motor dimensions are based on Baldor electric motors; motor dimensions L, BG, & AA may vary for other manufacturers.
3. Dimension "CP" to be filled in after selection of pump and motor.
4. Dimension "O" is 12.12 - inch for 1.5CB and 1.5CLB with 213 frame.

Cornell Pump Company
 P.O. Box 6334
 Portland, Oregon 97228-6334
 Web: www.cornellpump.com
 Phone (503) 653-0330 • Fax (503) 653-0338

ISO9001 CERTIFIED