

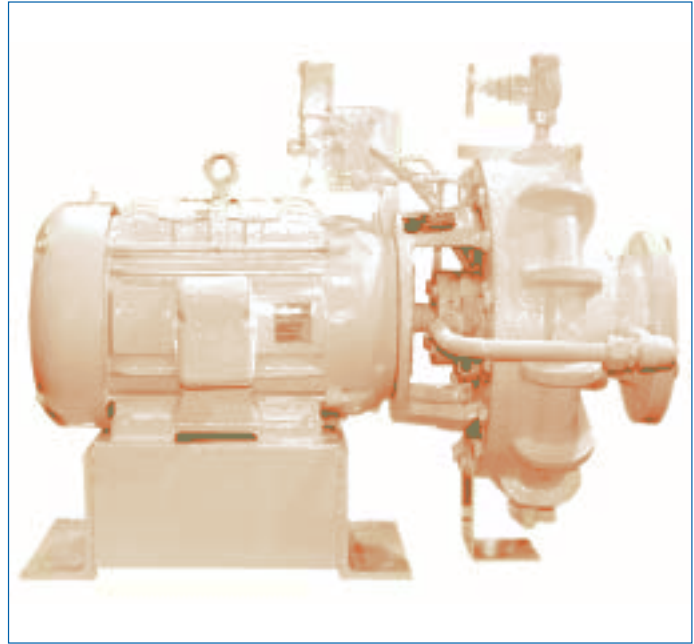


CORNELL PUMP COMPANY

Model 4CB Refrigeration Pump

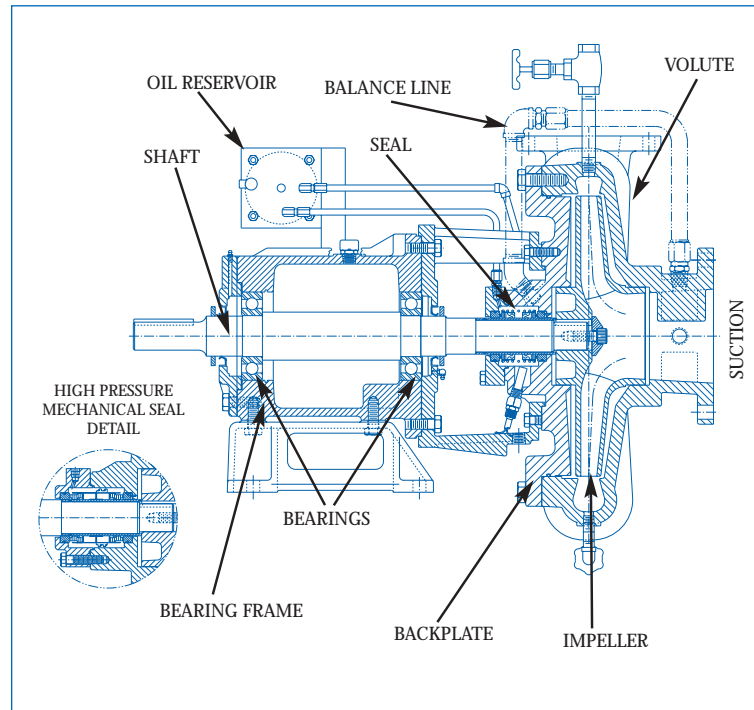
PUMP SPECIFICATION

- 4CB Close coupled refrigerant pump
- 6" x 4" Class 150 Flanged suction & discharge
- Constructed of ASTM A536 60-40-18 Ductile Iron
- Industry leading two year warranty
- Six pole (1200/1000RPM) operating speed
- Optional mounting configurations available
- Polar white
- **Mechanical Seal:**
John Crane, 2.25", T-2, double mechanical shaft seal with pressurized barrier fluid lubrication system, low oil limit switch, and seal chamber heater to maintain proper barrier oil viscosity
- **Motor Specification:**
Close coupled to a totally enclosed fan cooled, refrigerant atmosphere, hostile environment, premium efficiency motor, with class "F" installation; suitable for VFD applications

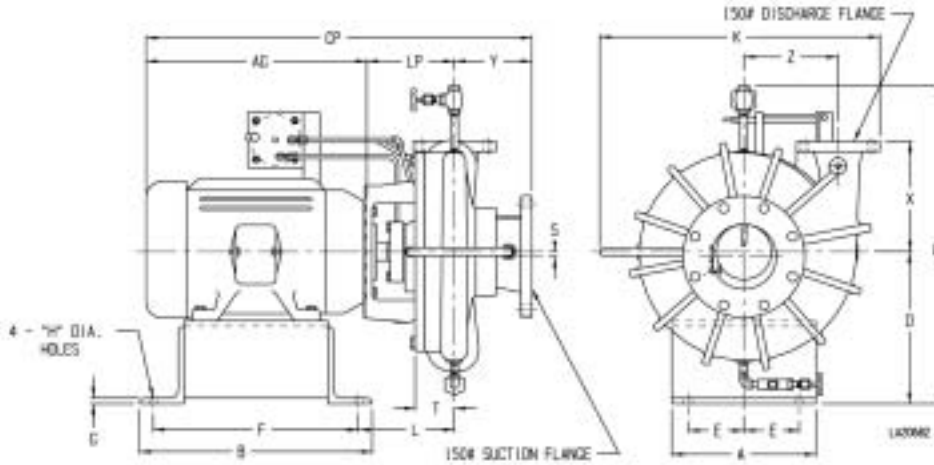


FEATURES & BENEFITS

- **Refrigerant Emission Free™ Sealing Technology**
 - an ultra-reliable system consisting of two mechanical seals mounted back to back
 - inboard seal prevents escape of refrigerant from the pump casing
 - outboard seal acts as a fail-safe or backup, and provides containment of a system compatible barrier fluid.
- **NPSHR**
 - exceptional NPSHR characteristics
 - characteristics are enhanced throughout entire operating range due to the single stage impeller and six pole operating speed
- **Vapor Entrainment**
 - seals are oil lubricated, and do not rely on the presence of pumpage for lubrication or cooling
 - the double mechanical sealing system allows the pump to continue to run until the system stabilizes and the pump reprimed itself - nuisance-tripping is avoided



PUMP DIMENSIONS



NOTES:

1. Motor dimensions are TEFC NEMA standard.
2. Motor dimensions may vary depending on manufacturers.
3. Flange connection dimension can vary $\pm .12$ inch.
4. Do not use for construction unless certified.
5. Overall dimensions can vary $\pm .12$ inch.

Model	NEMA Frame	CONNECTION			A	B	CP	D	E	F	G	H	K	L	LP	O	T	X	Y	Z
		Disch.	Suct.	Type																
4CB	284-286	4.0	6.0	FLG.	13.0	21.0	38.24	14.5	5	18.5	0.5	0.75	28.5	9.69	8.19	31.5	2.94	12.5	7.75	9.88
4CB	324-326	4.0	6.0	FLG.	15.0	23.0	38.24	15.5	6	20.0	0.5	0.75	28.5	9.69	8.19	32.5	2.94	12.5	7.75	9.88

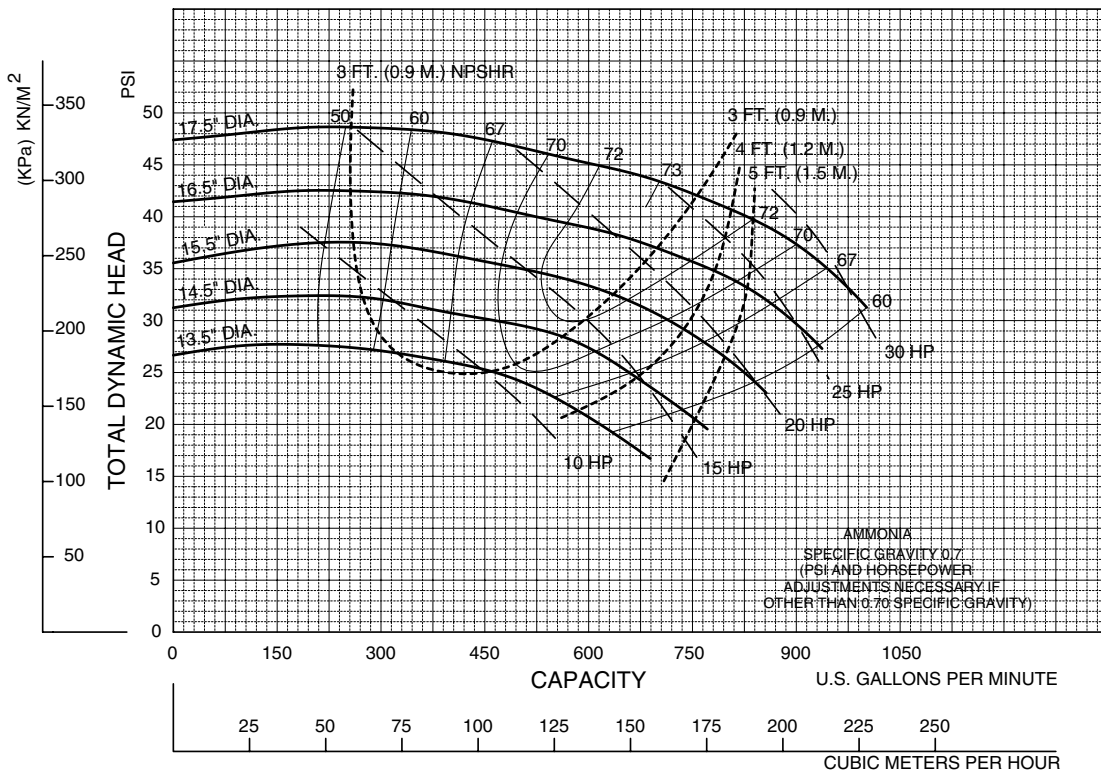
PERFORMANCE CURVES

4CB
1200 RPM

Speed	Impeller Dia.	Style	Solids Dia.	N _S	Suction	Discharge	SG
1170	VARIOUS	ENCLOSED	.44"	800	6"	4"	1.0

SINGLE VOLUTE

MOUNTING CONFIG.: CC, F



08/22/01

Cornell Pump Company

P.O. Box 6334 • Portland, Oregon 97228-6334

Web: www.cornellpump.com • Phone (503) 653-0330 • Fax (503) 653-0338

ISO9001:2000 CERTIFIED